

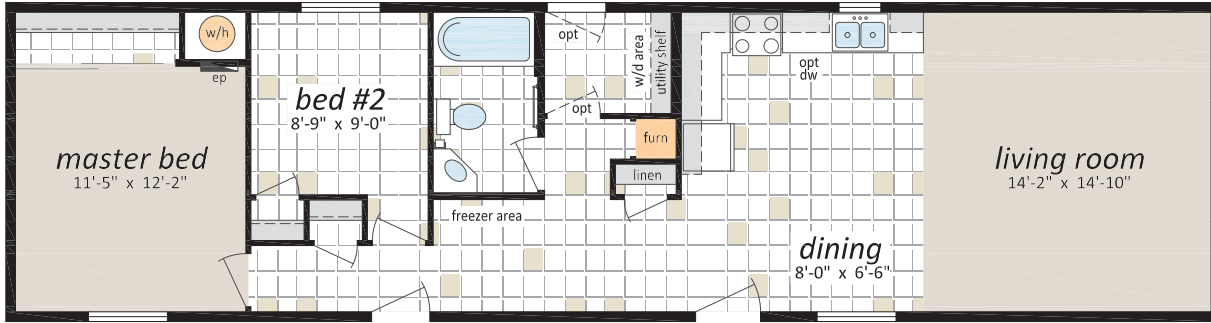
# The Statesman Prairie Series

*16' Wide Homes*

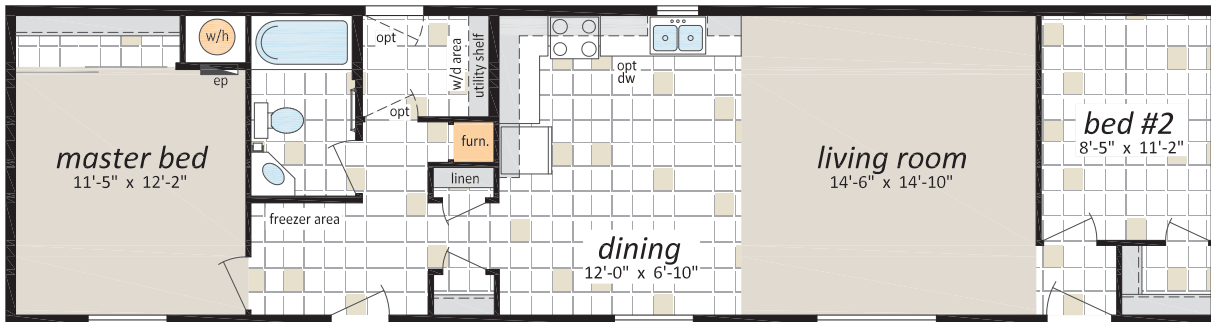


# The Statesman Prairie Series

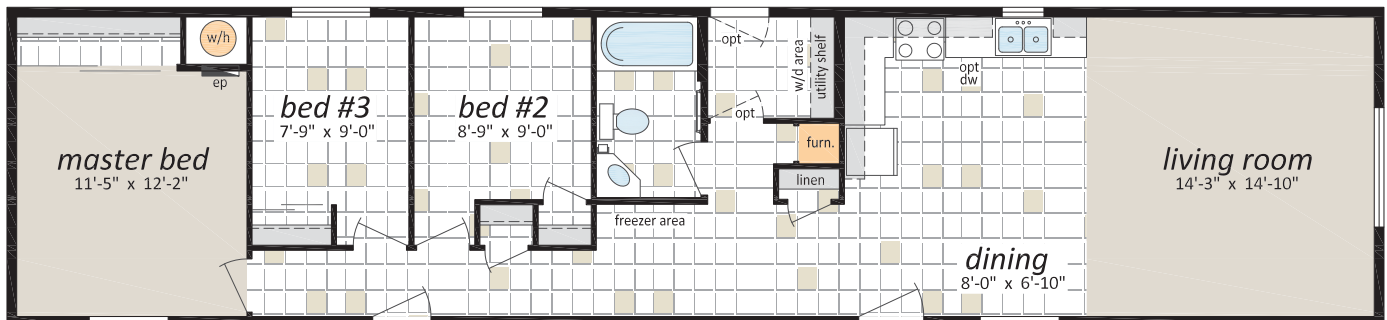
**PR-1001**  
**16' x 60', 2FL-1B**



**PR-1002**  
**16' x 60', 2FB-1B**



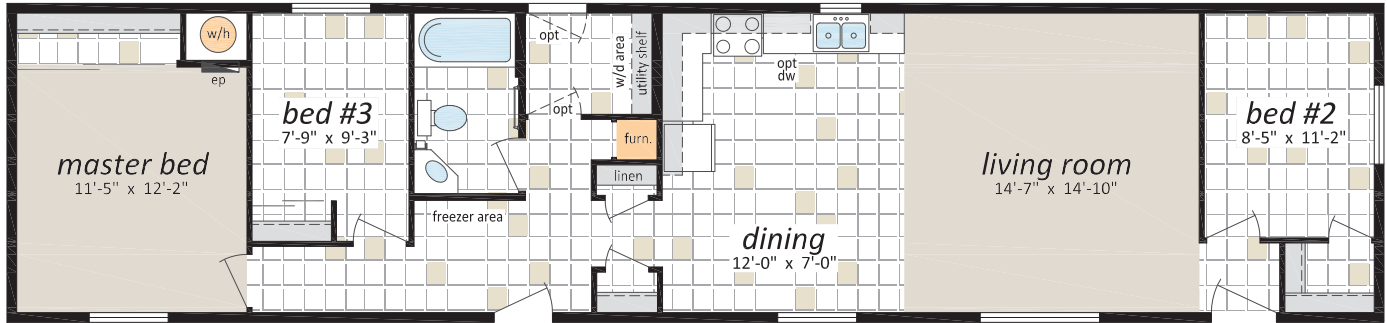
**PR-1003**  
**16' x 68', 3FL-1B**



# The Statesman Prairie Series

**PR-1004**

**16' x 68', 3FB-1B**



**PR-1005**

**16' x 76' 3FB-2B**



# The Statesman Prairie Series

## Standard Features and Specifications

### Exterior

- ◆ Asphalt Shingled Roof
- ◆ Engineered Roof Trusses
- ◆ Perimeter Eaves and Ridge Cap Venting
- ◆ Maintenance Free Full Vinyl Siding
- ◆ White Thermopane Windows with Screens
- ◆ Weatherproof Exterior Receptacle protected with GFI
- ◆ 36" Insulated Front Door with Peephole & Deadbolt
- ◆ 32" Insulated Rear Door with Peephole & Deadbolt
- ◆ Frost Free Exterior Tap with check valve
- ◆ Separate Receptacle for Heat Tape
- ◆ 2x6 Exterior Walls with Belt Rails
- ◆ 2x10 Floor Joists
- ◆ "Sturdi-Wall" Construction
- ◆ Coach Lights at all Exterior Doors

### Interior

- ◆ 5/8" Cresdek floor Decking (Screwed & Glued)
- ◆ R-34 Insulation in Ceilings
- ◆ R-20 Insulation in Walls
- ◆ R-26 Insulation in Floors
- ◆ Attractive Textured Gyproc Ceilings
- ◆ Designer Drapery Package
- ◆ 6 Mil Poly Vapor Barrier in Ceilings and Walls
- ◆ 100% Nylon Carpet in Living Room and Master Bedroom
- ◆ No Wax Quality Vinyl Floor Coverings
- ◆ Pre-Finished Interior Doors
- ◆ Decorative Vinyl covered Drywall
- ◆ Wire Closet Shelving
- ◆ Wire Shelf above Washer and Dryer

### Kitchen

- ◆ 18 cu. ft. Frost Free Refrigerator
- ◆ 30" Glass Door Electric Range
- ◆ 2-Speed Rangehood Vented to Exterior
- ◆ Rolled Drawer Hardware
- ◆ Double Stainless Steel Sink
- ◆ Roughed In for Dishwasher

### Bathroom

- ◆ GFI protected Receptacle
- ◆ Shower Rod and Curtain in all Bathrooms
- ◆ Chrome Towel Bar and Paper Holder
- ◆ White Bathroom Fixtures
- ◆ Dehumidistat on Main Bath Fan
- ◆ Shut off valves on all toilets
- ◆ Shower Heads in Baths

### Utilities

- ◆ 40 Gallon Electric Water Heater
- ◆ Natural Gas Furnace with Electronic Ignition
- ◆ Life Saving Smoke Detector(s)
- ◆ Plumbed and Wired for Washer & Dryer
- ◆ 100 amp. Service Panel
- ◆ Electrical Conduit through Floor
- ◆ Copper Wiring Throughout
- ◆ Light Bulb Package
- ◆ Built to Meet or Exceed Applicable Provincial Codes

## Optional Features

### Exterior

- 14' Dormer in Living Room
- Door Chimes at Front and Rear Doors
- Proguard Roof Membrane
- Residential Eaves
- Turbine Vent(s)
- Vinyl Shutters
- Heavy Snow Load Roof
- R-40 Insulation in Ceiling

### Interior

- 36" Exterior Door ILO 32" Door
- 9 Light Exterior Door
- Utility Room Door c/w Grill
- Aluminum Storm Door(s)
- Skylight(s)
- Deluxe Package - Cathedral Ceiling in Living Room and Kitchen
- Raised Panel Cabinet Doors throughout Home

### Kitchen

- Built-In Dishwasher
- Dishwasher Ready
- Self Cleaning Range

### Utilities

- Washer & Dryer
- 200 amp Service Panel
- Extra Conduit from Electrical panel Through Floor
- Extra Telephone/T.V. Jack(s)
- Air Conditioner-Ready Furnace
- Air Conditioning Unit
- Electric Furnace c/w 200 amp Panel
- Oil Gun Furnace
- Oil Gun Furnace-Air Condition Ready
- 40 Gal. Convertible Gas Water Heater

Authorized Retailer:



P.O. Box 845, #200 Highway 18 West  
Estevan, SK S4A 2A7  
[www.shelterhomes.ca](http://www.shelterhomes.ca)