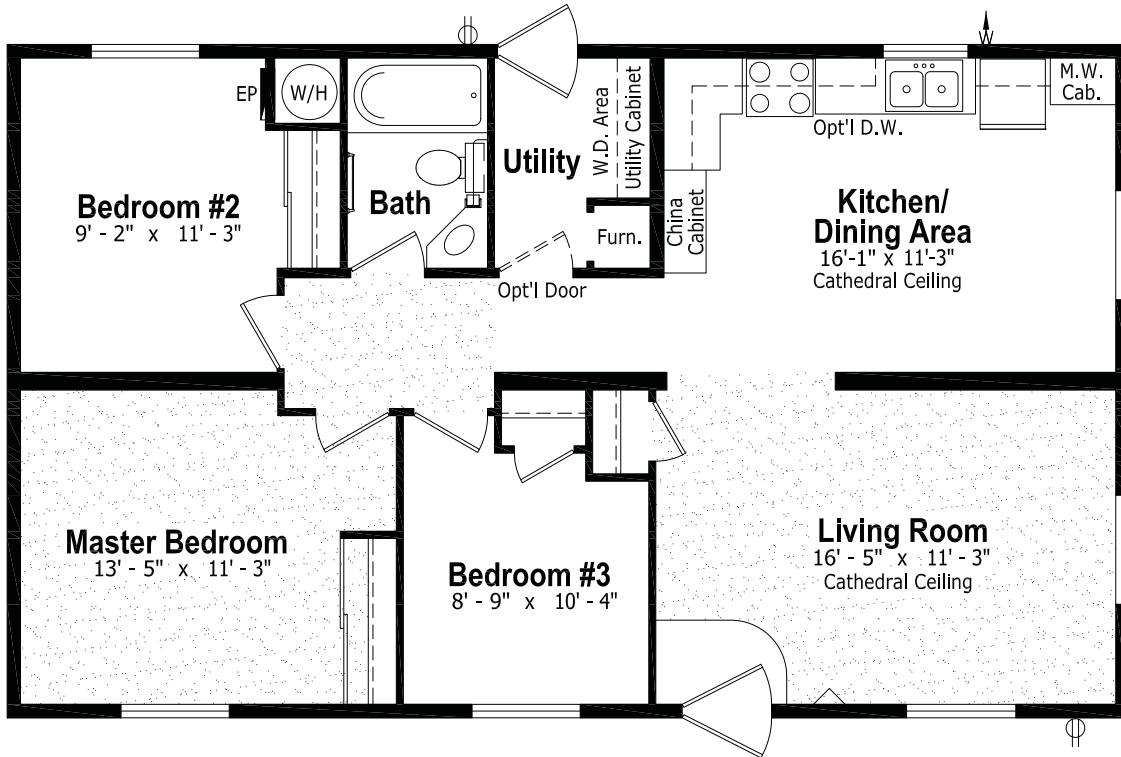


# The Ambassador Series

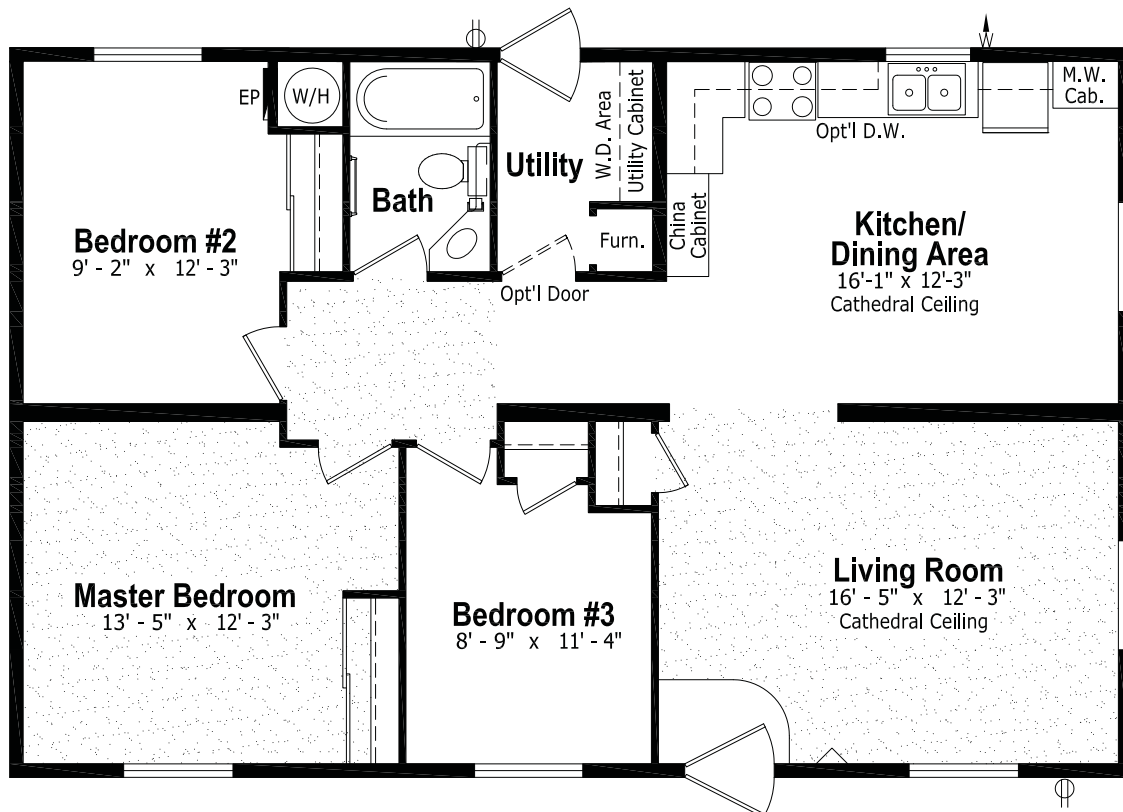
## Sectional Homes



**AM-856** 24' x 40' - 960 sq. ft.

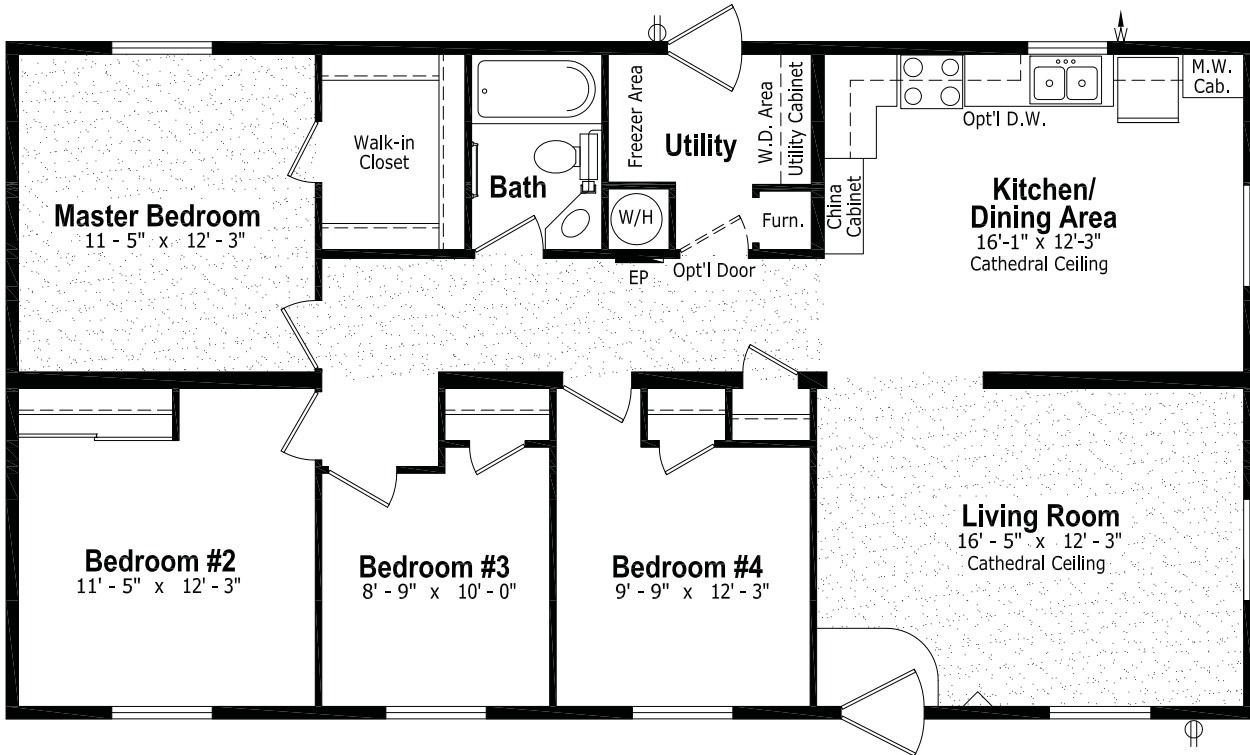


**AM-857** 26' x 40' - 1,040 sq. ft.

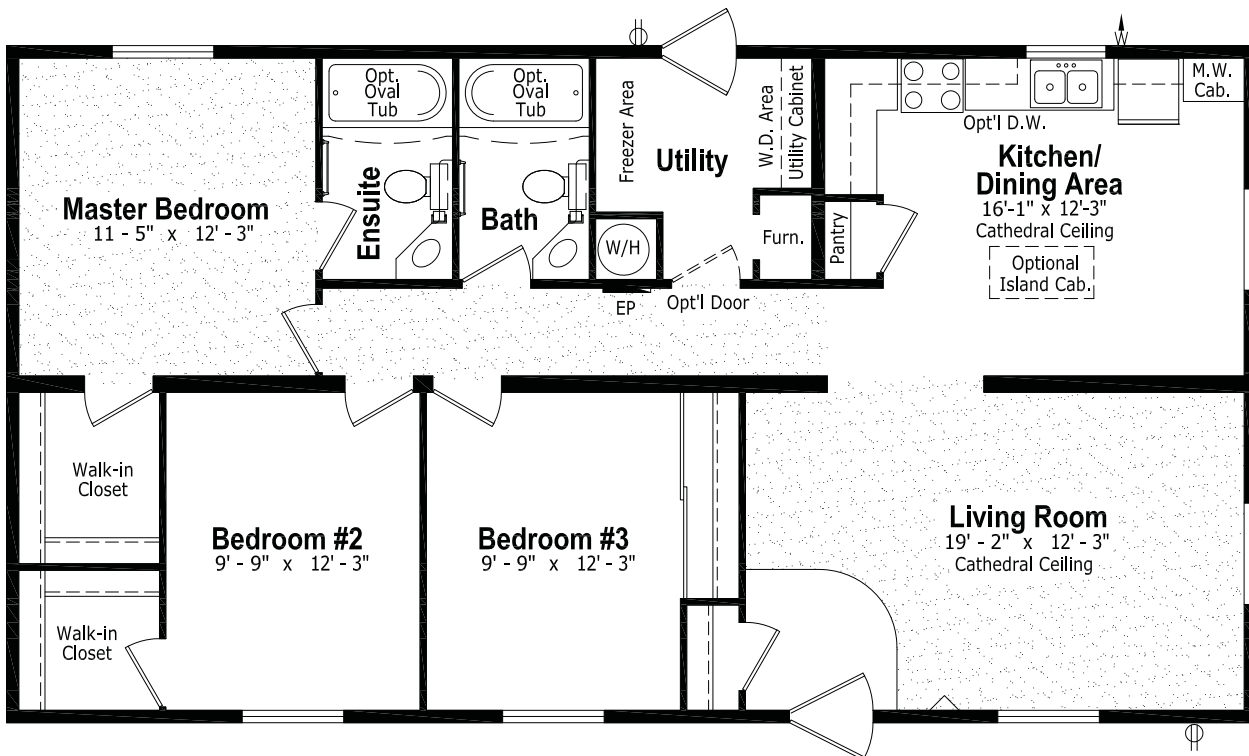


Floorplans are for illustrative purposes and may not be to scale.  
Please see your SRI Retailer for a dimensioned floorplan drawn to scale.

**AM-858** 26' x 48' - 1,248 sq. ft.

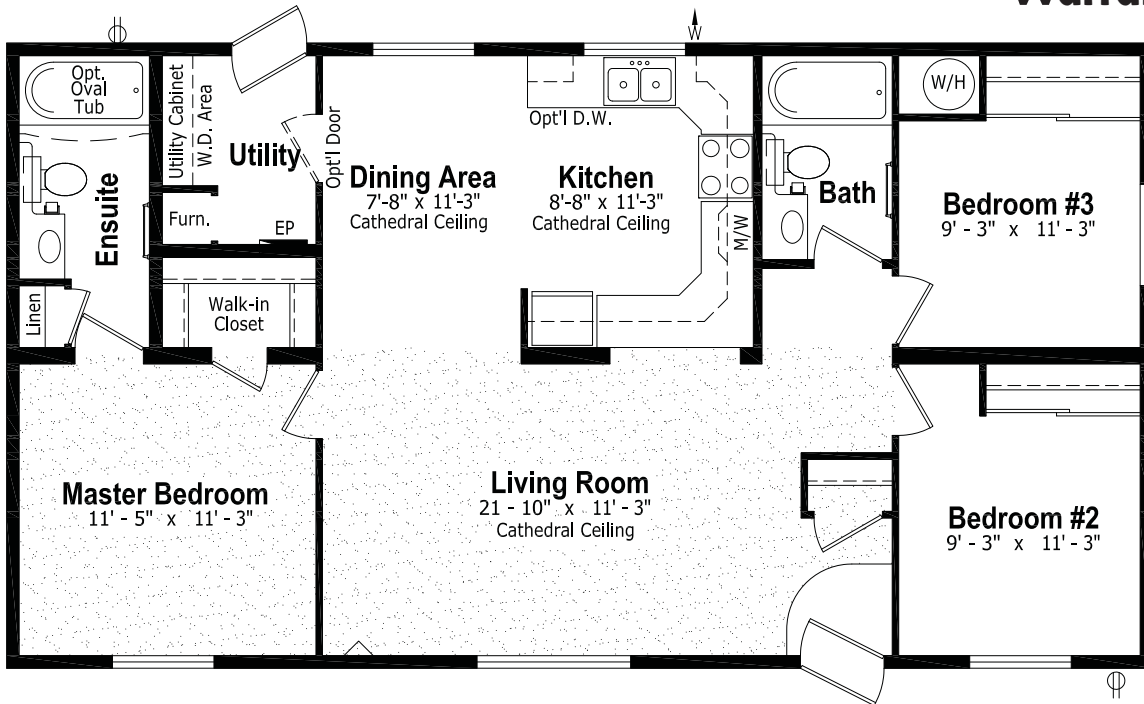


**AM-860** 26' x 48' - 1,248 sq. ft.

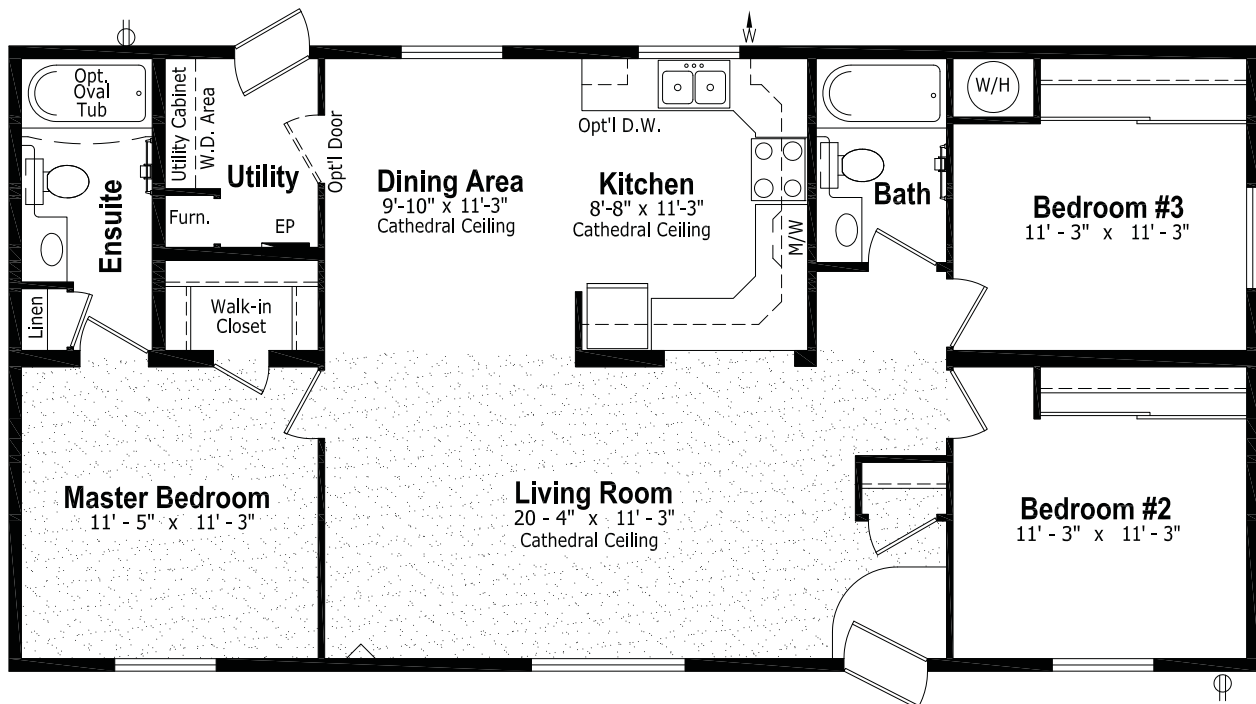


**AM-861 24' x 44' - 1,056 sq. ft.**

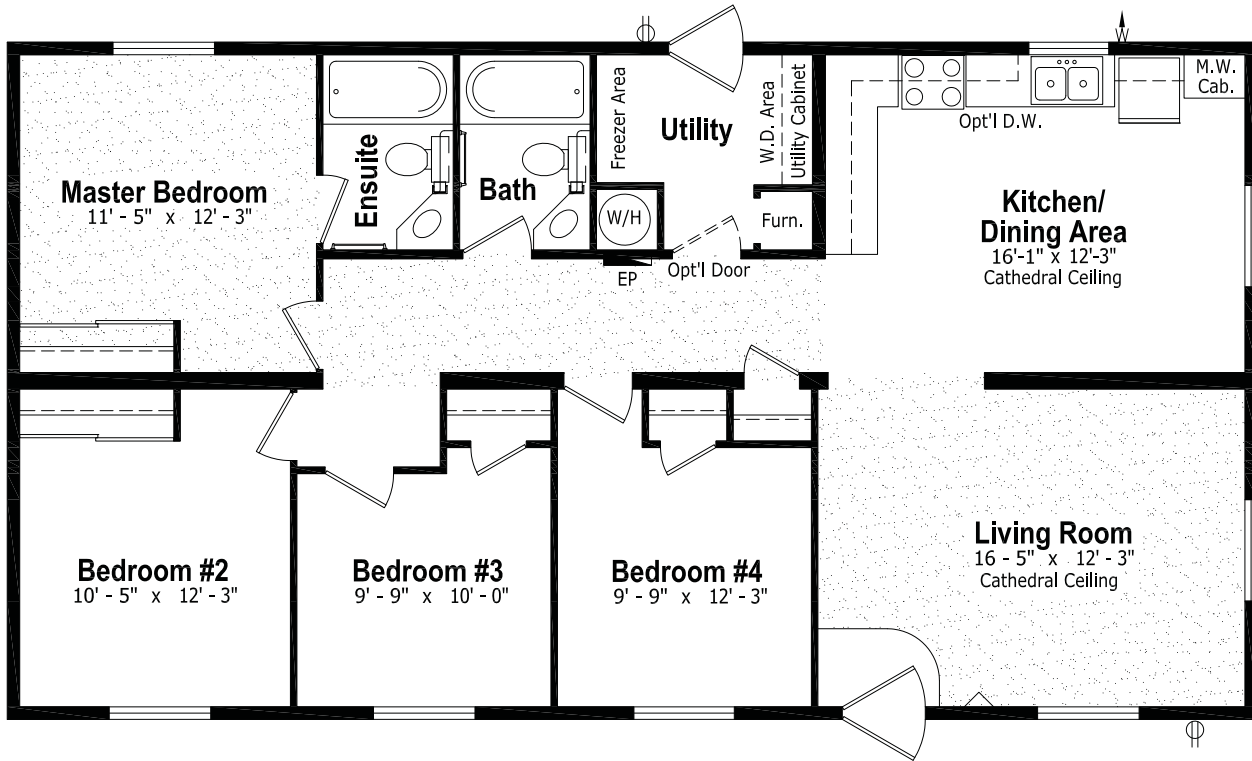
**10 Year**  
Warranty



**AM-862 24' x 48' - 1,152 sq. ft.**



**AM-863 26' x 48' - 1,248 sq. ft.**



## Optional Features

### Exteriors

- Skylights
- Deluxe Garden Doors & Patio Doors
- Sunburst Exterior Door
- Low-E Windows
- Palladian Windows
- Octagon Windows
- "Aurora" Living Room Windows
- "Vista", "Panorama" or "Moon Beam" Living Room Windows c/w Diamond Cut Ceiling
- Painted Wood Exterior Siding
- Turbine Vents
- Electric Door Chime
- Extra Exterior G.F.I.
- High Snow Load

### Interiors

- Painted Drywall Throughout Home
- Cathedral Ceiling in Master Bedroom
- Laminate Flooring
- Carpet in 2nd and 3rd Bedrooms
- Chair Rail Throughout Room
- French Doors
- Mirrored Closet Doors
- Closet Organizer
- Freezer Cabinets
- Utility Room Door c/w Grill

### Interiors (Cont'd)

- Ceiling Fan with Lights
- 2 - 4' Ceiling Mount or Recessed Fluorescent Lights
- Decora Switch Package
- Deluxe Drapery Package

### Kitchen

- Raised Panel Solid Oak Cabinet Doors
- Deluxe White Raised Panel Cabinet Doors
- Deluxe Maple PVC Cabinet Doors
- Etched Glass Cabinet Doors
- China Cabinets and Hutches
- Pantry
- Ceramic Tile Backsplash
- Oak Counter Edging
- Lazy Susan (will not fit in all models)
- Tip Out Soap Tray Below Kitchen Sink
- 3 Bulb Track Light c/w Dimmer Switch
- 24" Fluorescent Light Above Kitchen Sink
- Single Lever Faucet with Vegetable Sprayer
- Pot and Pan Drawers
- Combination Microwave and Rangehood
- Satin Nickel Faucet with Pull Out Spray

### Bathroom

- Ceramic Tile Backsplash
- Jetted Oval Tub
- Jetted One Piece Tub & Shower
- 60" Shower c/w Glass Doors
- Handicap Toilet
- Grab Bars
- Satin Nickel Faucet

### Utilities

- Gas Fireplace complete with Air Circulating Fan
- Electric Water Heater
- Electric Furnace
- Oil Gun Furnace
- Eye Level Oven and Cook Top Range
- Self Cleaning Range
- Two Door Side By Side Refrigerator
- Handi-Hite Bottom Mount Refrigerator
- Washer and Dryer
- Stacking Washer and Dryer
- Built-In Dishwasher
- Central Vacuum System
- Roughed in for Central Vacuum
- Air Conditioner Ready Furnace
- 2 1/2 Ton Air Conditioner
- Extra Telephone Jacks
- Surge Protector
- Shut Off Valves on All Fixtures
- Garage Ready Package
- 200 Amp Service Panel

### Standard Specifications for Extra Value and Convenience

#### Exterior

- \* Maintenance Free Vinyl Siding and Trim
- \* Engineered Roof Trusses
- \* Asphalt Shingle Roof (20 Year Warranty)
- \* Attractive Roof Eaves on Side of Home
- \* Perimeter Eaves and Continuous Ridge Venting System
- \* Third Gable
- \* Half Round Sunburst Pendiment above Living Room Window
- \* Decorative Pillars at Side Gable and Front of Home
- \* Colour Coordinated Shutters on Front End and Door Side Windows
- \* "Sturdi-Wall" Construction (See Dealer for Details)
- \* 2 x 6 Exterior Walls
- \* 2 x 8 Floor Joists
- \* 2x10 Floor Joists (Offsets, ST-464 and ST-465)
- \* Two 3" Belt Rails on Exterior Walls
- \* Frost Free Exterior Tap complete with Check Valve
- \* White Coach Light at Each Exterior Door
- \* 36" Steel Insulated 9 Lite Exterior Door at Front Entry
- \* 32" Steel Insulated Exterior Door at Rear Door complete with Peephole
- \* Aluminum Storm Doors at Front and Rear Entries
- \* White Vinyl Thermopane Windows with Screens
- \* Weatherproof Outside Receptacle protected with GFI

#### Interior

- \* 5/8" Floor Decking, Screwed, Nailed and Glued
- \* Insulation in Ceiling, Walls and Floors meets or exceeds all Applicable Codes
- \* 6 mil Poly Vapour Barrier in Ceilings and Side walls
- \* Cathedral Ceiling in Living Room, Kitchen and Dining Room
- \* Attractive Residential Spraytexted 1/2" SR Gyproc Ceilings
- \* 100% Nylon Carpet with Scotchguard Treatment in Living Room and Master Bedroom
- \* No Wax Vinyl Floor Coverings
- \* Copper Wiring Throughout
- \* Pewter Hardware Package Throughout
- \* Designer Drapery Package including Blinds on All Windows
- \* Chair Rail in Living Room
- \* Utility Cabinets above Washer and Dryer
- \* Wire Closet Shelving

#### Kitchen

- \* 18 cu. ft. 2-door Frost Free Refrigerator
- \* 30" Glass Door Electric Range with Clock, Delay Timer & Light
- \* Rangehood with Two Speeds and Light, Vented to the Exterior
- \* Cabinets with Framed Raised Panel Doors
- \* Rolled Drawer Hardware
- \* Etched Glass Doors in Standard China Cabinets
- \* Cabinets over Bar
- \* Rough-In for Dishwasher including Drain Connection and 110v Junction Box
- \* Double Stainless Steel Kitchen Sink
- \* Single Lever Faucet

#### Bathroom

- \* One Piece Wall Tub and Shower
- \* Single Lever Faucets
- \* Dehumidistat on Main Bath Fan
- \* Exhaust Fan Vented to the Exterior
- \* Shower Rod and Curtain in all Bathrooms
- \* Framed Raised Panel Cabinet Doors
- \* Pressure Balanced Taps on Tub(s)
- \* G.F.I. Receptacle
- \* White Bath Fixtures
- \* Shut Off Valves on All Toilets

#### Utilities

- \* Natural Gas Furnace with Electronic Ignition
- \* 40 Gallon Convertible Natural Gas Water Heater
- \* 100 Amp Electrical Service Panel
- \* Electrical Conduit through Floor
- \* Light Bulb Package
- \* Life Saving Smoke Detector(s)
- \* Living Room Wired for Ceiling Fan with Separate Light Switch



P.O. Box 845, #200 Highway 18 West  
 Estevan, SK S4K 2A7  
[www.shelterhomes.ca](http://www.shelterhomes.ca)

Authorized Retailer: