

Retreat,
Relax,
Renew!

SHELTER
HOME SYSTEMS

Proudly made in
Canada
to Canadian
Standards

The Canadian Cottage Series

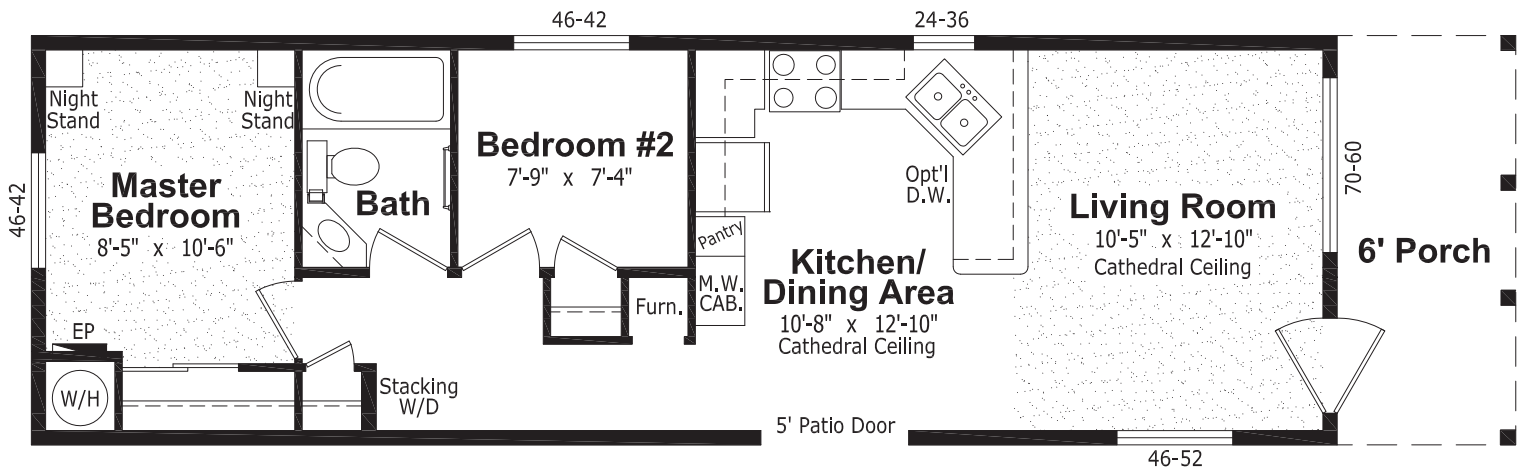


SRI
H O M E S

The Canadian Cottage Series



“The Riverview”
14' x 50', 616 sq. ft., 2FL-1B



Popular Optional Features

- Exterior Third Gables
- Garden Door
- Energy Efficient Low-E Windows
- Vinyl Shutters
- Exterior Door with Half Round or 9 Lite Insert
- Skylights
- Turbine Vents
- High Snow Load
- Laminate Flooring
- Classique White Raised Panel Passage Doors
- Utility Room Door with Grill
- Ceiling Fan with Lights
- Deluxe Drapery Package #2
- Pewter Drapery Package
- 40 Gallon Electric Water Heater
- Electric Furnace
- Air Conditioner-Ready Furnace
- Extra Telephone/Cable Boxes
- Stacking Washer and Dryer
- 200 Amp Service Panel
- Single Lever Faucet with Vegetable Sprayer
- Self Cleaning Oven
- Built-In Dishwasher
- Combination Microwave/Range Hood
- Jetted One Piece Tub & Shower
- Handicap Toilet

The Canadian Cottage Series

Standards and Specifications

Exterior

- ★ Asphalt Shingle Roof (25 Year Warranty)
- ★ Engineered Roof Trusses
- ★ Perimeter Eave and Continuous Ridge Venting
- ★ Maintenance Free Vinyl Siding and Trim
- ★ Attractive Roof Eaves with 4" over hang
- ★ Shutters on Curbside of Home
- ★ "Sturdi-Wall" Construction (see Dealer for Details)
- ★ 2 x 6 Exterior Walls, 16" O.C. with 2 - 3" Belt Rails
- ★ 2 x 8 Floor Joists (14' wide)
- ★ 2 x 10 Floor Joists (16' wide)
- ★ Weatherproof Exterior Receptacle Protected with GFI
- ★ Frost Free Exterior Tap with Check Valve
- ★ 6' Front Porch w/Aluminum Railing
- ★ Smart Start Fascia, Corners and Columns
- ★ Painted Beams at Hitchend
- ★ Roughsawn Vinyl Shakes at Front Gable
- ★ 4 Decorative Pot Lights in Porch Area
- ★ White Coach Light at Patio Door
- ★ White Thermopane Windows with Screens
- ★ 36" Insulated Front Door with Peephole
- ★ 5' Patio Door at Dining Room
- ★ Aluminum Storm Door at Front Entry
- ★ Separate Receptacle for Heat Tape

Interior

- ★ 5/8" Sub Floor (glued & screwed)
- ★ R 34 Insulation in Ceiling, R-20 in Walls, R-26 in Floors
- ★ 6 Mil Poly Vapour Barrier in Ceilings and Walls
- ★ Attractive Textured Gyproc Ceilings
- ★ Cathedral Ceiling in Living Room, Kitchen and Dining Room
- ★ Stainmaster Carpet in Living Room, Kitchen and Master Bedroom
- ★ No Wax Quality Vinyl Floor Coverings
- **2 New Choices (see previous page)**
- ★ Two Master Bedroom Night Stands
- ★ Wire Closet Shelving
- ★ Pewter Hardware Throughout
- ★ Designer Drapery Package including Blinds on all Windows
- ★ Pre-finished Interior Doors

Kitchen

- ★ 18 cu. ft. Frost Free Refrigerator
- ★ 30" Glass Door Electric Range
- ★ Double Stainless Steel Sink
- ★ Rough in for Dishwasher including Drain Connections and 110 V Junction Box
- ★ 2-Speed Rangehood Vented to Exterior
- ★ Cabinets with Flat Panel Doors
- ★ Rolled Drawer Hardware

Bathroom

- ★ One Piece Wall Tub & Shower with Shower Rod and Curtain in all Bathrooms
- ★ Cabinets with Flat Panel Doors
- ★ GFI Protected Receptacle
- ★ Pewter Towel Bar and Paper Holder
- ★ White Bathroom Fixtures
- ★ Dehumidistat on Main Bath Fan
- ★ Shut Off Valves on all Fixtures
- ★ Pressure Balanced Taps on Tub

Utilities

- ★ Convertible 40 Gallon Gas Water Heater
- ★ Natural Gas Furnace with Electronic Ignition
- ★ Life Saving Smoke Detector(s)
- ★ Plumbed and Wired for Stacking Washer & Dryer
- ★ 100 Amp Service Panel
- ★ Electrical Conduit through Floor
- ★ Copper Wiring Throughout
- ★ Light Bulb Package



Authorized Retailer: