

Super Saver Homes



SHELTER
HOME SYSTEMS

Standards and Specifications

Exterior

- ★ Asphalt Shingle Roof (20 Year Warranty)
- ★ Residential Eaves - 12" over hang
- ★ 12' Dormer over Living Room Window, Models SS-006 and SS-007
- ★ Dormers over Living Room and Master Bedroom Windows in Model SS-008
- ★ Engineered Roof Trusses
- ★ Perimeter Eave and Ridge Cap Venting
- ★ Maintenance Free Vinyl Siding
- ★ Smart Start Fascia, Corners and Pillars at Living Room Window
- ★ White Thermopane Windows with Screens
- ★ Weatherproof Exterior Receptacle Protected with GFI
- ★ 36" Insulated Front Door with Peephole
- ★ 32" Insulated Rear Door with Peephole
- ★ Aluminum Storm Doors
- ★ Frost Free Exterior Tap with Check Valve
- ★ Separate Receptacle for Heat Tape
- ★ 2 x 6 Exterior Walls, 16" O.C. with Belt Rails
- ★ 2 x 10 Floor Joists
- ★ "Sturdi-Wall" Construction (see Dealer for Details)
- ★ White Coach Lights at both Exterior Doors

Interior

- ★ Cathedral Ceiling in Living Room, Kitchen, Dining Room and Utility Room
- ★ Cathedral Ceiling in Master Bedroom and Ensuite- Models SS-006 and SS-007
- ★ R 34 Insulation in Ceiling, R-20 in Walls, R-26 in Floors
- ★ Attractive Textured Gyproc Ceilings
- ★ Designer Drapery Package including Blinds
- ★ 6 Mil Poly Vapour Barrier in Ceilings and Walls
- ★ Utility Cabinets above Washer and Dryer
- ★ Stainmaster Carpet in Living Room and Master Bedroom
- ★ No Wax Quality Vinyl Floor Coverings
- ★ 5/8" Sub Floor (glued & screwed)
- ★ Pewter Hardware Throughout
- ★ Wire Closet Shelving
- ★ Pre-finished Interior Doors

Kitchen

- ★ 18 cu. ft. Frost Free Refrigerator
- ★ 30" Glass Door Electric Range
- ★ Built In Dishwasher in Model SS-006
- ★ Rough in for Dishwasher including Drain Connections and 110 V Junction Box, Models SS-007 and SS-008
- ★ Microwave Shelf Built into Upper Kitchen Cabinets
- ★ Corner Pantry
- ★ 2-Speed Rangehood Vented to Exterior
- ★ Cabinets with Raised Panel Doors
- ★ Rolled Drawer Hardware
- ★ Double Stainless Steel Sink

Bathroom

- ★ Jetted Oval Wall Tub in Ensuite in Model SS-006
- ★ Jetted Corner Oval Wall Tub in Ensuite in Model SS-007
- ★ One Piece Wall Tub/Shower in Model SS-008
- ★ Cabinets with Raised Panel Doors
- ★ GFI Protected Receptacle
- ★ One Piece Wall Tub & Shower with Shower Rod and Curtain in all Bathrooms
- ★ Pewter Towel Bar and Paper Holder
- ★ White Bathroom Fixtures
- ★ Dehumidistat on Main Bath Fan
- ★ Shut Off Valves on all Fixtures

Utilities

- ★ Convertible 40 Gallon Gas Water Heater
- ★ Natural Gas Furnace with Electronic Ignition
- ★ Life Saving Smoke Detector(s)
- ★ Plumbed and Wired for Washer & Dryer
- ★ 100 Amp Service Panel
- ★ Electrical Conduit through Floor
- ★ Copper Wiring Throughout
- ★ Light Bulb Package
- ★ Built to Applicable Provincial Codes



Optional Features

Exterior

- ★ Deluxe Garden, Exterior French and Patio Doors
- ★ 9 Light and Sunburst Exterior Doors
- ★ 36" Rear Exterior Door ILO 32"

Interior

- ★ Triple Pane 4'x4' Skylight
- ★ Low E Windows
- ★ Single French Door with Sheer
- ★ Washer & Dryer
- ★ Carpet in Bedroom #2 and/or #3

Kitchen/Bathroom

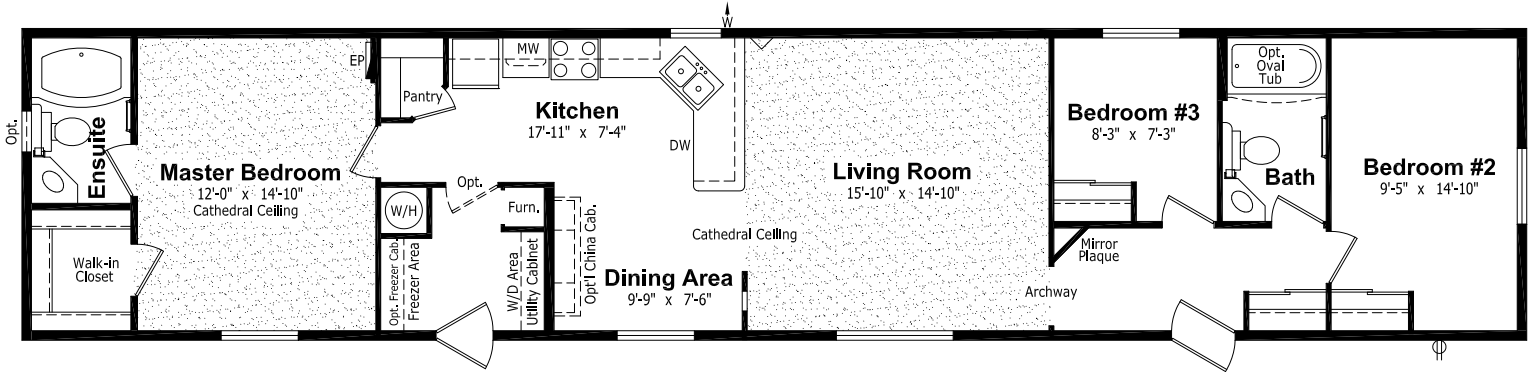
- ★ Self Cleaning Range
- ★ Microwave/Rangehood
- ★ Bath Window
- ★ Oval Wall Tub (in SS-008)

Utilities

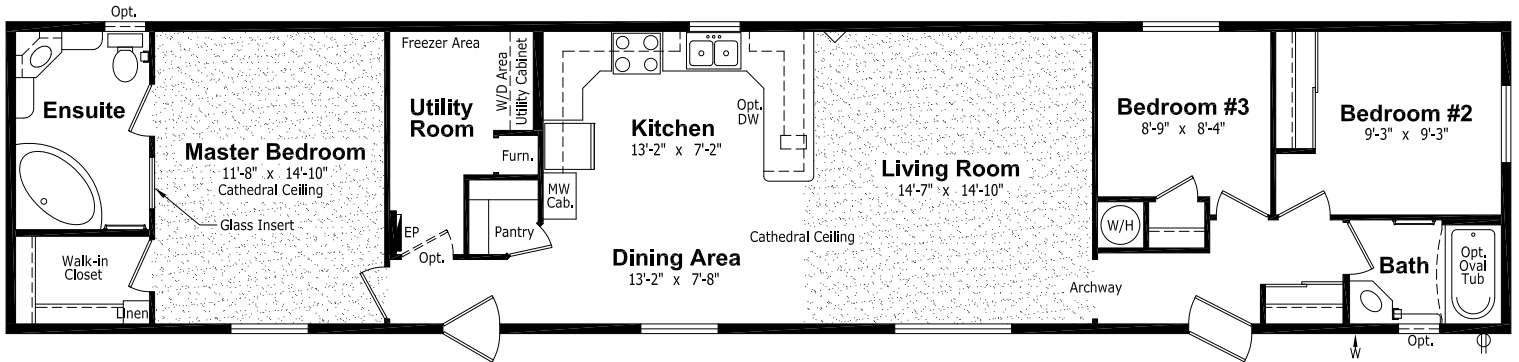
- ★ 200 amp Electrical Panel
- ★ Prewired Telephone Jacks
- ★ Garage Ready
- ★ Ceiling Fan with Lights
- ★ Air Conditioner

Super Saver Homes

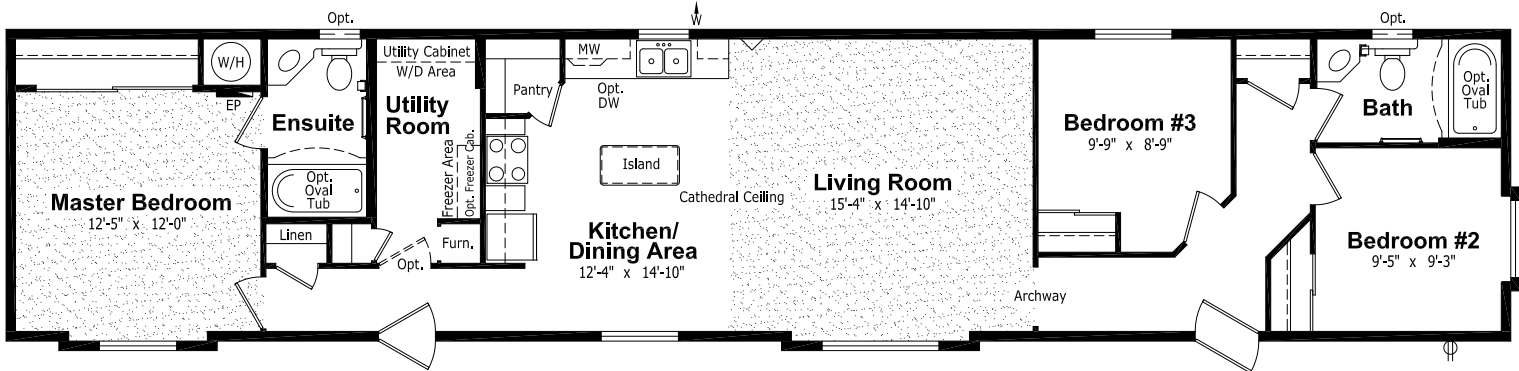
SS-006, 16' x 76', 3FB - 2B



SS-007, 16' x 76', 3FB - 2B



SS-008, 16' x 76', 3FB - 2B



P.O. Box 845, #200 Highway 18 West
 Estevan, SK S4K 2A7
www.shelterhomes.ca

Authorized Retailer:

This is not a fully detailed specification. SRI Homes ULC reserves the right to change specifications, designs, materials and suppliers without notice and without incurring obligation. Information contained herein is from data available at the time of printing. Photos and renderings may show optional features. Printed in Canada, June 2009.