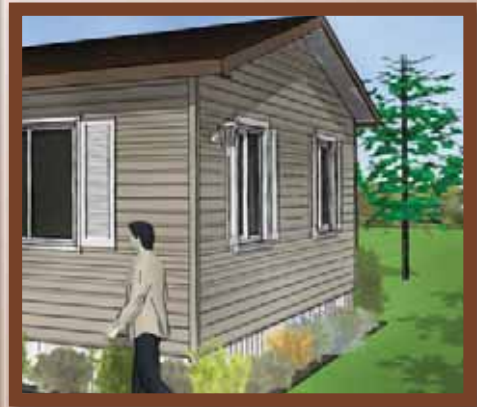
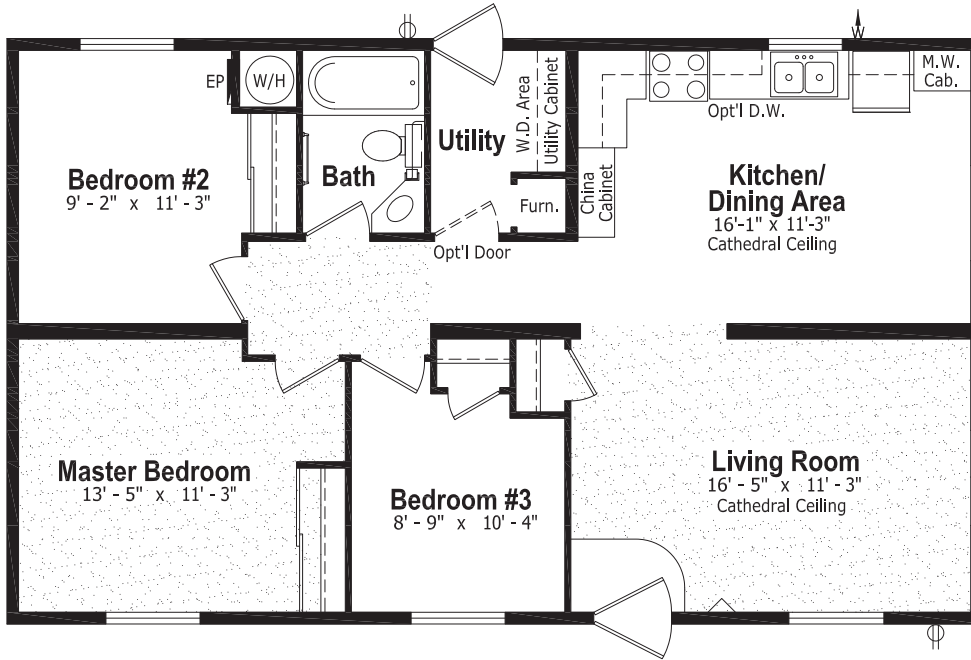


# The Statesman Series

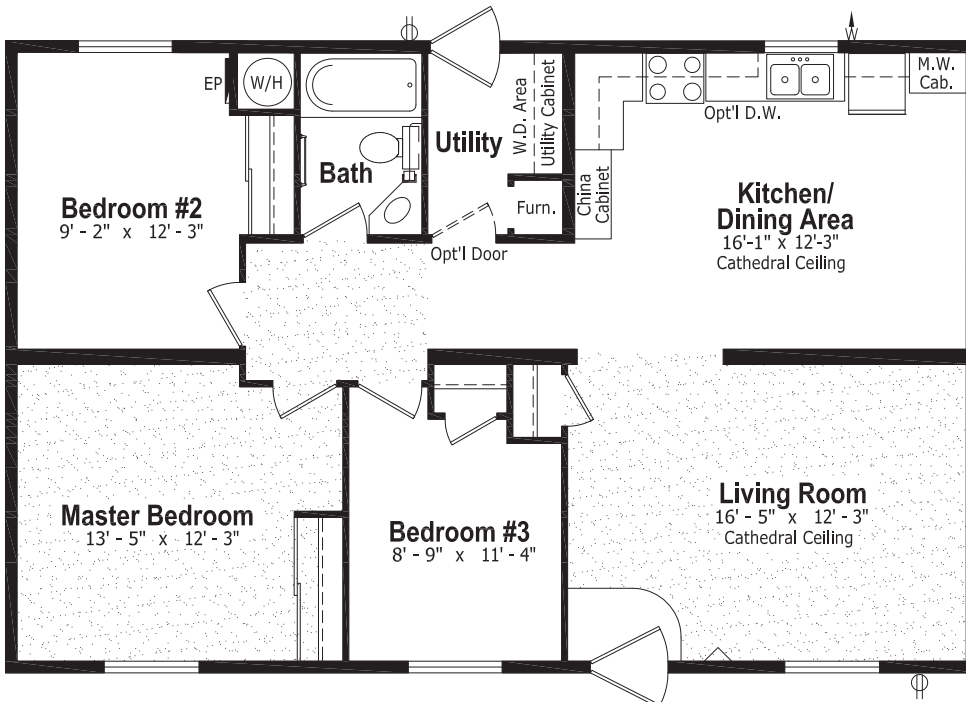
## *Sectional Homes*



**ST-456, 24' x 40' - 960 sq. ft.**

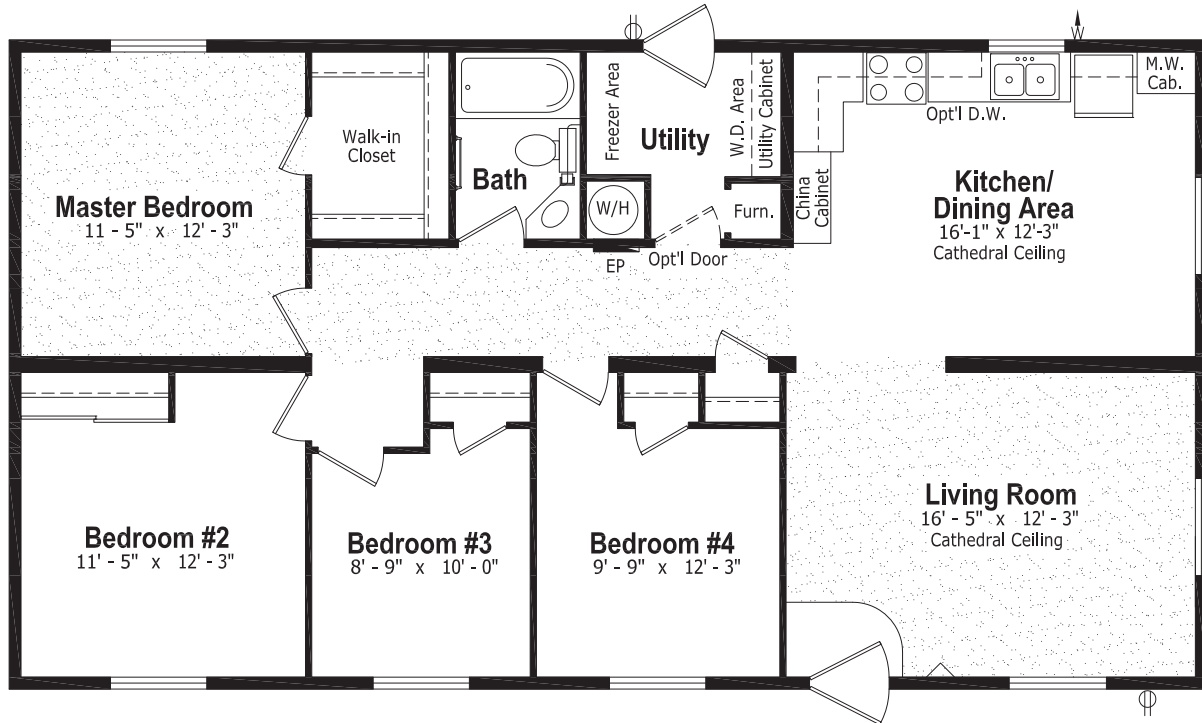


**ST-457, 26' x 40' - 1,040 sq. ft.**

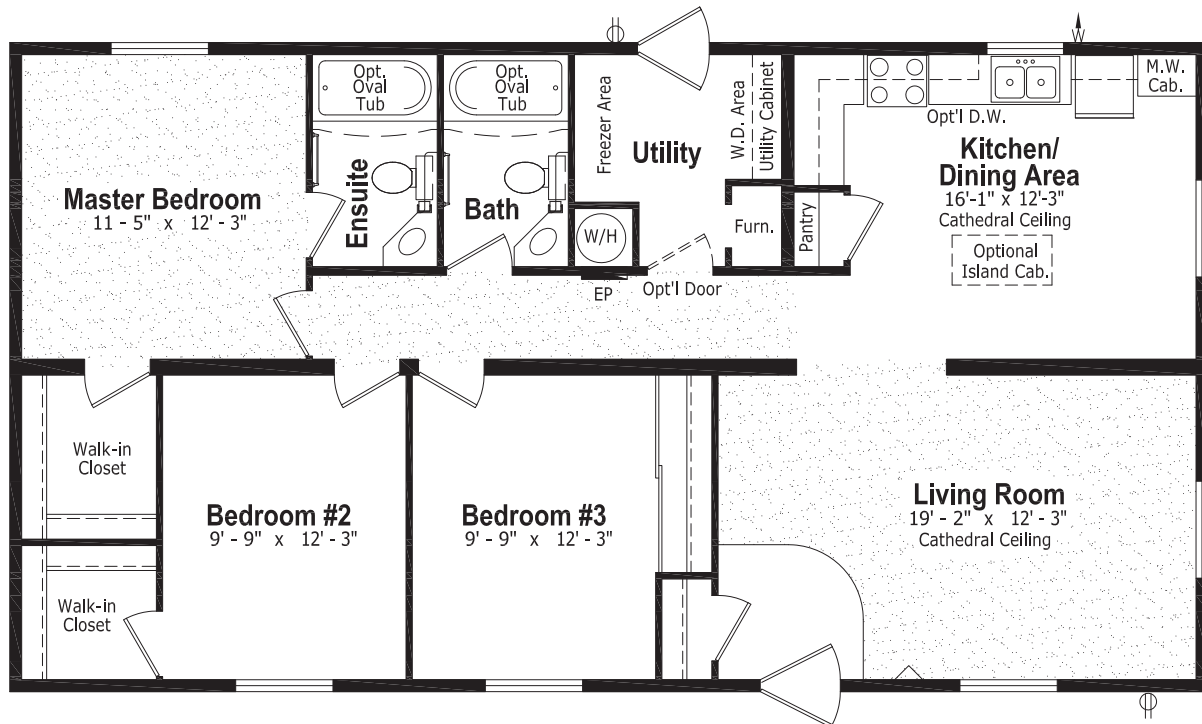


Floorplans are for illustrative purposes and may not be to scale.  
Please see your SRI Retailer for a dimensioned floorplan drawn to scale.

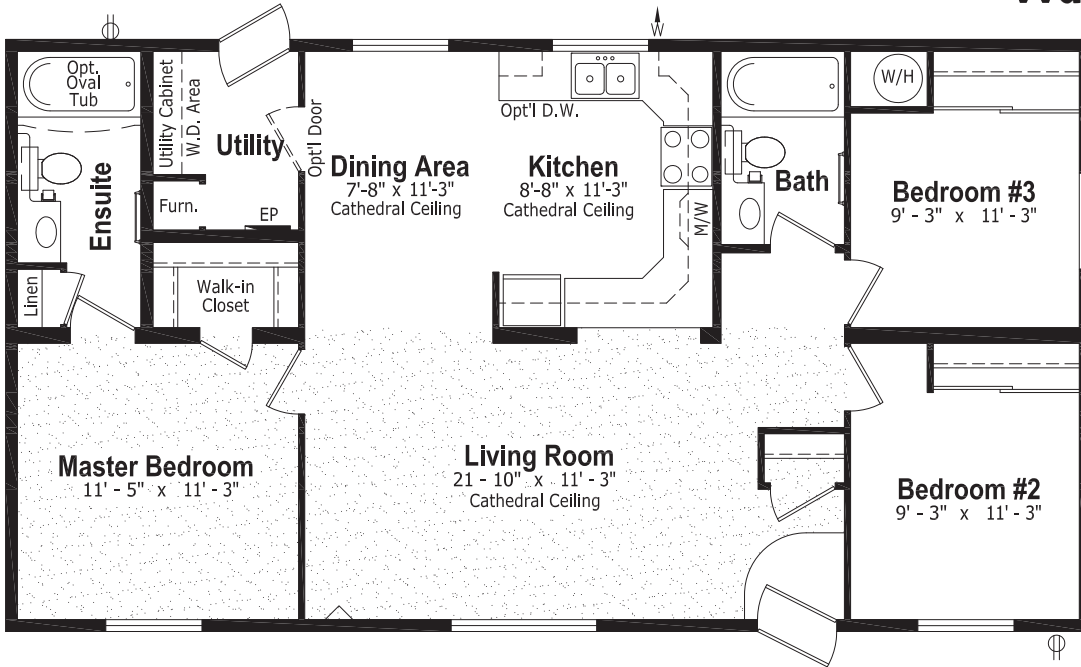
## ST-458, 26' x 48' - 1,248 sq. ft.



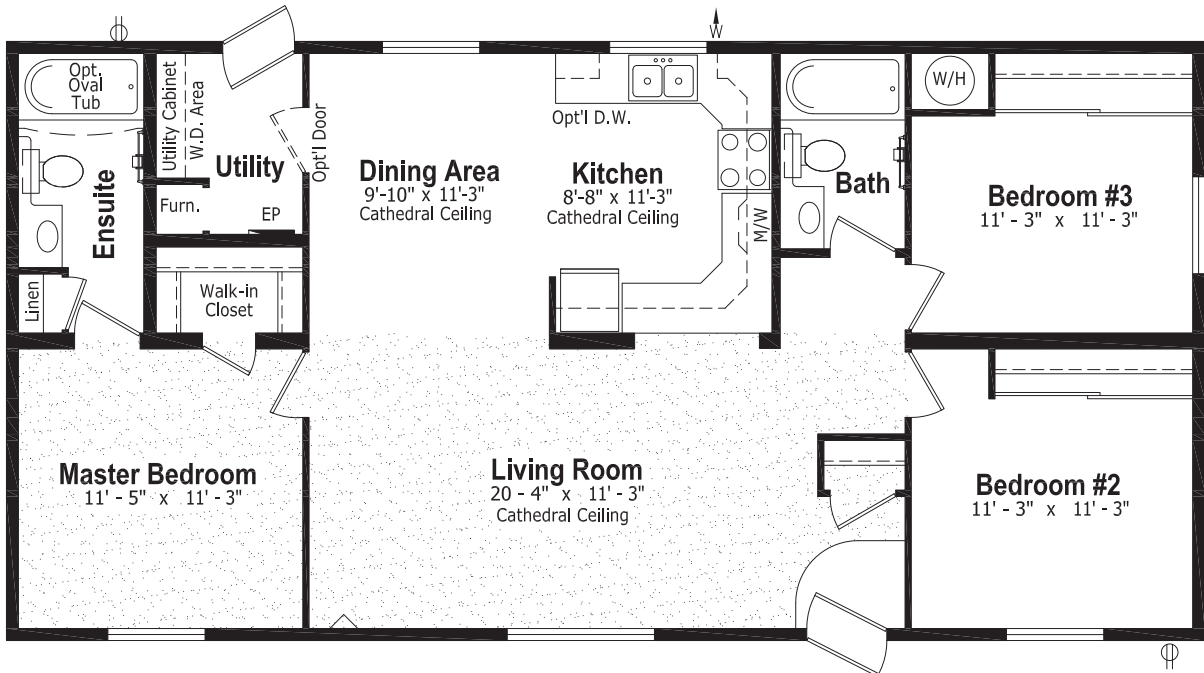
## ST-460, 26' x 48' - 1,248 sq. ft.



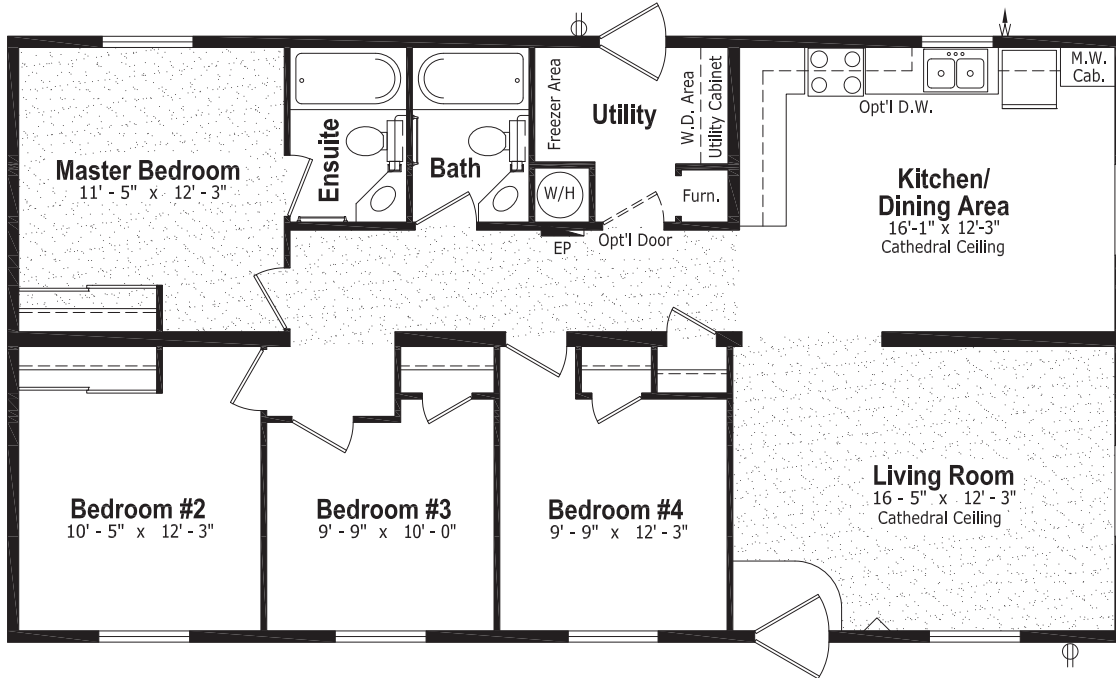
**ST-461, 24' x 44' - 1,056 sq. ft.**



**ST-462, 24' x 48' - 1,152 sq. ft.**



**ST-463, 26' x 48' - 1,248 sq. ft.**



**Optional Features**

**Exteriors**

- Skylights
- Deluxe Garden Doors & Patio Doors
- Sunburst Exterior Door
- Low-E Windows
- Palladian Windows
- Octagon Windows
- "Aurora".Living Room Windows
- "Vista", "Panorama" or "Moon Beam" Living Room Windows c/w Diamond Cut Ceiling
- Painted Wood Exterior Siding
- Turbine Vents
- Electric Door Chime
- Extra Exterior G.F.I.
- High Snow Load

**Interiors**

- Painted Drywall Throughout Home
- Cathedral Ceiling in Master Bedroom
- Laminate Flooring
- Carpet in 2nd and 3rd Bedrooms
- Chair Rail Throughout Room
- French Doors
- Mirrored Closet Doors
- Closet Organizer
- Freezer Cabinets
- Utility Room Door c/w Grill

**Interiors (Cont'd)**

- Ceiling Fan with Lights
- 2 - 4' Ceiling Mount or Recessed Fluorescent Lights
- Decora Switch Package
- Deluxe Drapery Package

**Kitchen**

- Raised Panel Solid Oak Cabinet Doors
- Deluxe White Raised Panel Cabinet Doors
- Deluxe Maple PVC Cabinet Doors
- Etched Glass Cabinet Doors
- China Cabinets and Hutches
- Pantry
- Ceramic Tile Backsplash
- Oak Counter Edging
- Lazy Susan (will not fit in all models)
- Tip Out Soap Tray Below Kitchen Sink
- 3 Bulb Track Light c/w Dimmer Switch
- 24" Fluorescent Light Above Kitchen Sink
- Single Lever Faucet with Vegetable Sprayer
- Pot and Pan Drawers
- Combination Microwave and Rangehood
- Satin Nickel Faucet with Pull Out Spray

**Bathroom**

- Ceramic Tile Backsplash
- Jetted Oval Tub
- Jetted One Piece Tub & Shower
- 60" Shower c/w Glass Doors
- Handicap Toilet
- Grab Bars
- Satin Nickel Faucet

**Utilities**

- Gas Fireplace complete with Air Circulating Fan
- Electric Water Heater
- Electric Furnace
- Oil Gun Furnace
- Eye Level Oven and Cook Top Range
- Self Cleaning Range
- Two Door Side By Side Refrigerator
- Handi-Hite Bottom Mount Refrigerator
- Washer and Dryer
- Stacking Washer and Dryer
- Built-In Dishwasher
- Central Vacuum System
- Roughed in for Central Vacuum
- Air Conditioner Ready Furnace
- 2 1/2 Ton Air Conditioner
- Extra Telephone Jacks
- Surge Protector
- Shut Off Valves on All Fixtures
- Garage Ready Package
- 200 Amp Service Panel

### Standard Specifications for Extra Value and Convenience

#### Exterior

- ◆ Maintenance Free Vinyl Siding and Trim
- ◆ Engineered Roof Trusses
- ◆ Upgrade Shingle Roof
- ◆ Attractive Roof Eaves on Side of Home
- ◆ Perimeter Eaves and Continuous Ridge Venting System
- ◆ Decorative Roof Gables on Side of Home
- ◆ Decorative Pillars at Side Gable
- ◆ Colour Coordinated Shutters on Front End and Door Side Windows
- ◆ "Sturdi-Wall" Construction (See Dealer for Details)
- ◆ 2 x 6 Exterior Walls
- ◆ 2 x 8 Floor Joists
- ◆ Two 3" Belt Rails on Exterior Walls
- ◆ Frost Free Exterior Tap complete with Check Valve
- ◆ White Coach Light at Each Exterior Door and front End of Home
- ◆ 36" Steel Insulated 9 Lite Exterior Door at Front Entry
- ◆ 32" Steel Insulated Exterior Door at Rear Door complete with Peephole
- ◆ Aluminum Storm Doors at Front and Rear Entries
- ◆ White Vinyl Thermopane Windows with Screens
- ◆ Weatherproof Outside Receptacle protected with GFI

#### Interior

- ◆ 5/8" Floor Decking, Screwed, Nailed and Glued
- ◆ Insulation in Ceiling, Walls and Floors meets or exceeds all Applicable Codes
- ◆ 6 mil Poly Vapour Barrier in Ceilings and Sidewalls
- ◆ Cathedral Ceiling in Living Room, Kitchen and Dining Room
- ◆ Attractive Residential Spraytexted 1/2" SR Gyproc Ceilings
- ◆ 100% Nylon Carpet with Scotchguard Treatment in Living Room and Master Bedroom
- ◆ No Wax Vinyl Floor Coverings
- ◆ Copper Wiring Throughout
- ◆ Residential Swirl Light Fixtures

#### Interior (Cont'd)

- ◆ Pewter Hardware Package Throughout
- ◆ Designer Drapery Package including Blinds
- ◆ Utility Cabinets above Washer and Dryer
- ◆ Wire Closet Shelving

#### Kitchen

- ◆ 18 cu. ft. 2-door Frost Free Refrigerator
- ◆ 30" Glass Door Electric Range with Clock, Delay Timer & Light
- ◆ Rangehood with Two Speeds and Light, Vented to the Exterior
- ◆ Cabinets with Framed Raised Panel Doors
- ◆ Rolled Drawer Hardware
- ◆ Etched Glass Doors in Standard China Cabinets
- ◆ Rough-In for Dishwasher including Drain Connection and 110v Junction Box
- ◆ Double Stainless Steel Kitchen Sink
- ◆ Single Lever Faucet

#### Bathroom

- ◆ One Piece Wall Tub and Shower
- ◆ Single Lever Faucets
- ◆ Dehumidistat on Main Bath Fan
- ◆ Exhaust Fan Vented to the Exterior
- ◆ Shower Rod and Curtain in all Bathrooms
- ◆ Framed Raised Panel Cabinet Doors
- ◆ GFI Receptacle
- ◆ White Bath Fixtures
- ◆ Shut Off Valves on All Toilets

#### Utilities

- ◆ Natural Gas Furnace with Electronic Ignition
- ◆ 40 Gallon Natural Gas Water Heater (Convertible)
- ◆ 100 Amp Electrical Service Panel
- ◆ Electrical Conduit through Floor
- ◆ Light Bulb Package
- ◆ Life Saving Smoke Detector(s)
- ◆ Living Room Wired for Ceiling Fan with Separate Light Switch



P.O. Box 845, #200 Highway 18 West  
 Estevan, SK S4K 2A7  
[www.shelterhomes.ca](http://www.shelterhomes.ca)

Authorized Retailer: